



CROSS CREEK BEND
Goshen, CA



WWW.SMEEHOMES.COM

[f](#) [@SMEEHOMES](#)



Cross Creek Bend

Standard Features



Countertops

- Tile countertops with a 6-inch backsplash are standard in the kitchen.
- Tile countertops with a 4-inch backsplash are standard in the bathrooms and laundry room.

Flooring

- Vinyl Plank is standard in all wet areas.

Showers

- All showers and shower/tub combos will be a complete Fiberglass insert.
- All tubs will be an insert with a 6-inch tile surround.

Plumbing Fixtures

- Chrome is standard.
- Chrome pull-down kitchen faucet is standard.
- Stainless Steel kitchen sink top mount is standard.
- White top mount sinks in the bathrooms are standard.

Door Hardware

- Chrome is standard.
- Knobs are standard.

Lighting Fixtures

- Brushed nickel is standard.
- 1 ceiling fan is standard.

Appliances

- Black or white is standard.
- Dishwasher, free standing gas range, and a hood vent are standard, micro hood is an upcharge.

Baseboards

- 3 1/2 inch baseboards are standard.

Cabinetry

- Brandy stain is standard.
- Brushed nickel knobs are standard.

Roofing

- CertainTeed Landmark Cool Roof is the only brand and style to be used. Any color as shown on the sample in the design center is available.

Interior Paint

- Flat "Smee White" is standard.

Disclaimer:

Commodities are in a state of great fluctuation. Smee Homes, Inc has the right to change any of the above as needed, as stipulated in section 5.11 of the Smee Homes, Inc Purchase Agreement.





Introducing Your Smee Smart Home Features

All homes built by Smee Homes Inc are constructed with energy efficient, water conserving & safety conscious materials. Our homes come standard with energy saving high performance windows, fast acting tankless water heaters, and much more. From the foundation to the rooftop, these “smart” home features and appealing finishing touches help you live with security, great savings, genuine entertainment, and peace of mind.



Energy Smart

- Solar Reflective Roofing Shingles, Cool Roofing Design with a High Solar Reflectance
- Tankless Gas Water Heater
- Forced Air Heating & Cooling with Programmable Thermostat
- Dual Glazed Low-E® Energy Efficient Vinyl Windows
- Gas Dryer Connections
- LED Can Lights with Dimmer Switches
- Programmable timers on all Exterior Lighting
- Insulated Fiberglass Front Entry Door
- R-21 Exterior Wall Insulation
- R-38 Ceiling Insulation
- Occupancy Sensors at Bathrooms with Automatic Shut Off
- Solar System Power with High Efficiency Solar Panels*
- EVC Prewire in Garage

Water Smart

- Water Conserving Low-Flow Toilets
- Water Conserving Shower Heads
- Water Conserving Landscaping with Programmable Sprinkler System
- ENERGY STAR® Certified Dishwasher

Safety Smart

- Direct Interior Access from the Garage
- Window Screens and Locks on All Operable Windows
- Privacy Fencing at Rear Yard
- Insulated Front Entry Door with Peep Hole and Dead Bolt Lock
- Exterior Entry Lighting at All Doors
- Smoke Detectors in All Bedrooms
- Fire Sprinkler System with Concealed Heads



 *Select Homes, Select Plans inquire with Sales Agent 

In our continuing effort to improve our product, Smee Homes, Inc. reserves the right to make changes or modifications to maps, plan specifications, materials, features, and colors without prior notice. Prices and terms are subject to change and availability. Optional features may be included at additional cost and are subject to construction cut-off dates. All maps, plans, landscaping and elevation rendering are artist's conceptions and are not to scale. All square footages are approximate. Consult a sales associate for additional information.

Smee Homes, Inc does not warrant or guarantee that energy efficiencies in homes will result in cost savings for all buyers. (Effective Date – 7/13/2020)





CROSS CREEK BEND

The Packwood

1271 SqFt, 4 Bedrooms, 2 Bathrooms

CROSS CREEK BEND

GOSHEN, CA

(559) 775-7277

f @SMEEHOMES



Elevation A



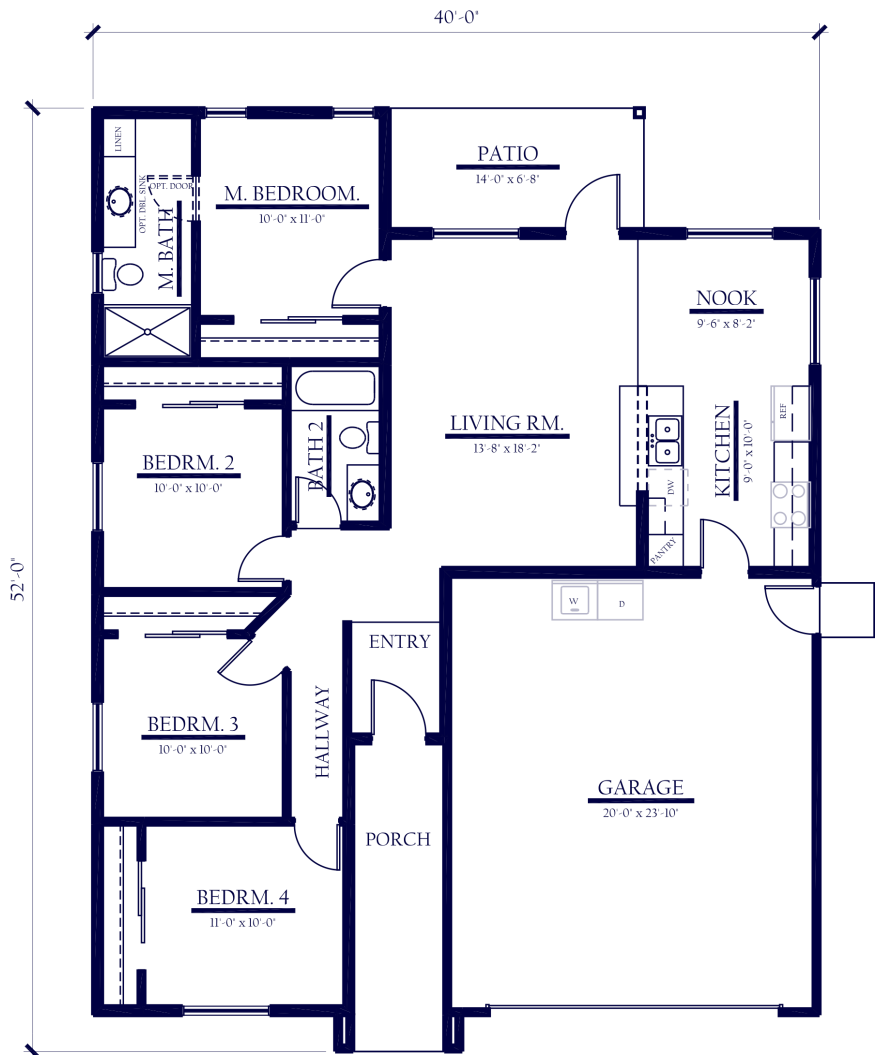
Elevation B



Elevation C



Elevation D



FLOOR PLAN 1271

REV. 10/05/2021

Floorplans and renderings are for illustrative purposes only and are subject to change. Smee Homes, Inc. All rights reserved.

Cross Creek Bend homes are listed by Melson Realty, Inc (lic #01477389). Listing Agents Javier Martinez (lic #01393690) (559) 202-6747 and Jose Jimenez (lic #01741038) (559) 972-7764.



CROSS CREEK BEND

The Kings

1340 SqFt, 3 Bedrooms, 2 Bathrooms

CROSS CREEK BEND

GOSHEN, CA

(559) 775-7277

f @SMEEHOMES



Elevation A



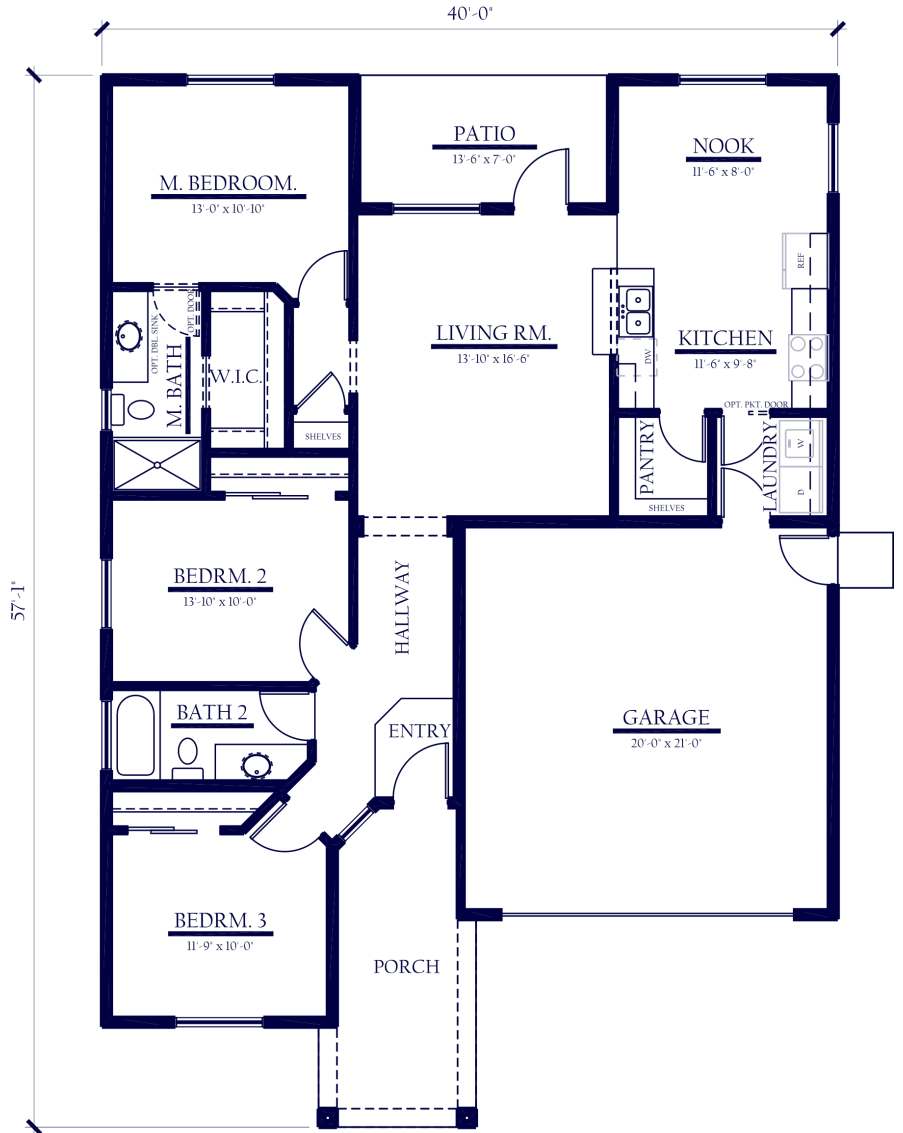
Elevation B



Elevation C



Elevation D



FLOOR PLAN 1340

REV. 10/05/2021

Floorplans and renderings are for illustrative purposes only and are subject to change. Smee Homes, Inc. All rights reserved.

Cross Creek Bend homes are listed by Melson Realty, Inc (lic #01477389). Listing Agents Javier Martinez (lic #01393690) (559) 202-6747 and Jose Jimenez (lic #01741038) (559) 972-7764.



CROSS CREEK BEND

CROSS CREEK BEND

GOSHEN, CA

(559) 775-7277

f @SMEEHOMES

The Mill

1419 SqFt, 3 Bedrooms, 2 Bathrooms



Elevation A



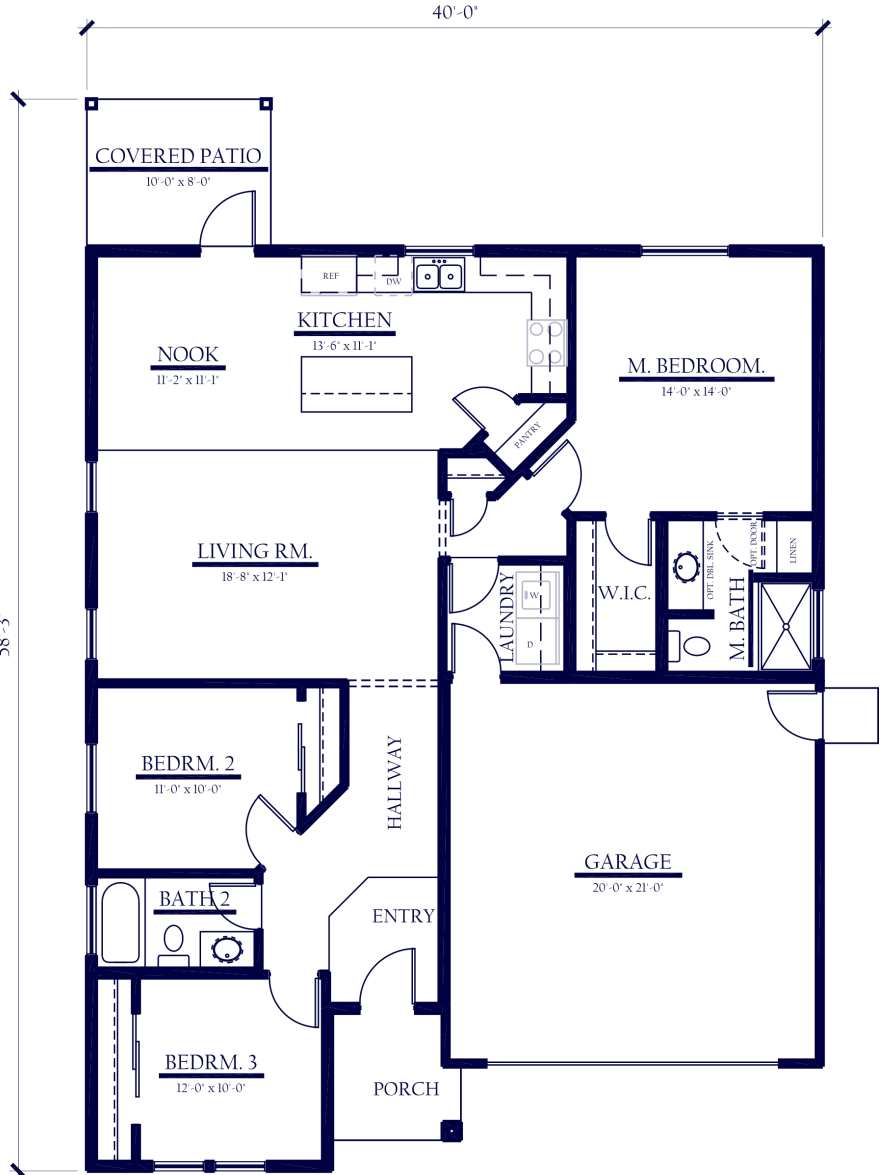
Elevation B



Elevation C



Elevation D



FLOOR PLAN 1419

REV. 10/05/2021

Floorplans and renderings are for illustrative purposes only and are subject to change. Smee Homes, Inc. All rights reserved.

Cross Creek Bend homes are listed by Melson Realty, Inc (lic #01477389). Listing Agents Javier Martinez (lic #01393690) (559) 202-6747 and Jose Jimenez (lic #01741038) (559) 972-7764.



CROSS CREEK BEND

CROSS CREEK BEND

GOSHEN, CA

(559) 775-7277

f @SMEEHOMES

The Tule

1533 SqFt, 4 Bedrooms, 2 Bathrooms



Elevation A



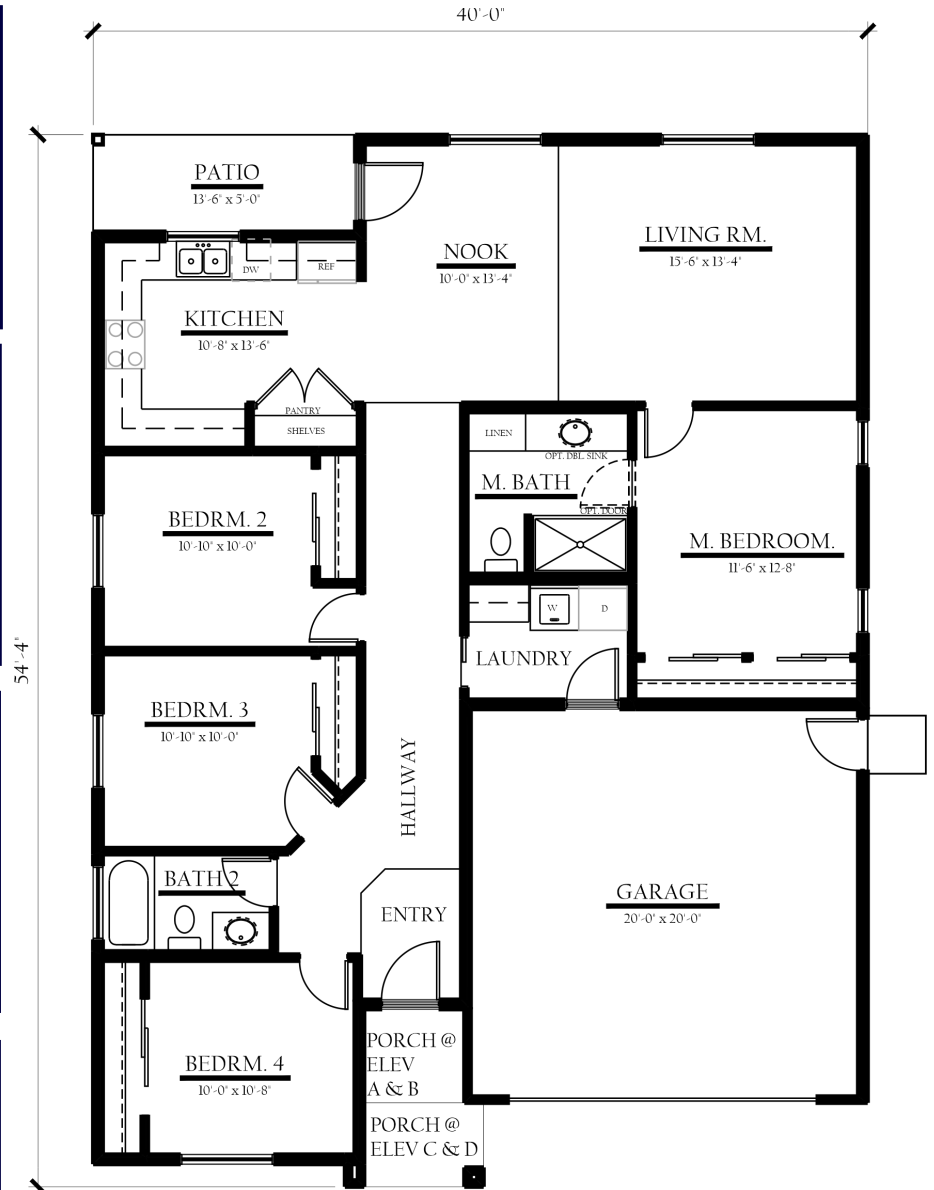
Elevation B



Elevation C



Elevation D



Floorplans and renderings are for illustrative purposes only and are subject to change. Smee Homes, Inc. All rights reserved.

Cross Creek Bend homes are listed by Melson Realty, Inc (lic #01477389). Listing Agents Javier Martinez (lic #01393690) (559) 202-6747 and Jose Jimenez (lic #01741038) (559) 972-7764.





Veronica Barragan

Loan Officer
Nexa Mortgage
(559) 351-7646
NMLS #328750



Wes Covert

Loan Officer
NEXA Mortgage LLC
(559)333-5575
NMLS # 274635



Patty Jimenez

Loan Officer
Vero Mortgage
(559) 679-6926
NMLS # 1212801

Scan to Start Your
USDA Direct Application

