

Cross Creek Bend

30769 Ashland Road, Goshen CA

(559) 775-7277



Elevation A



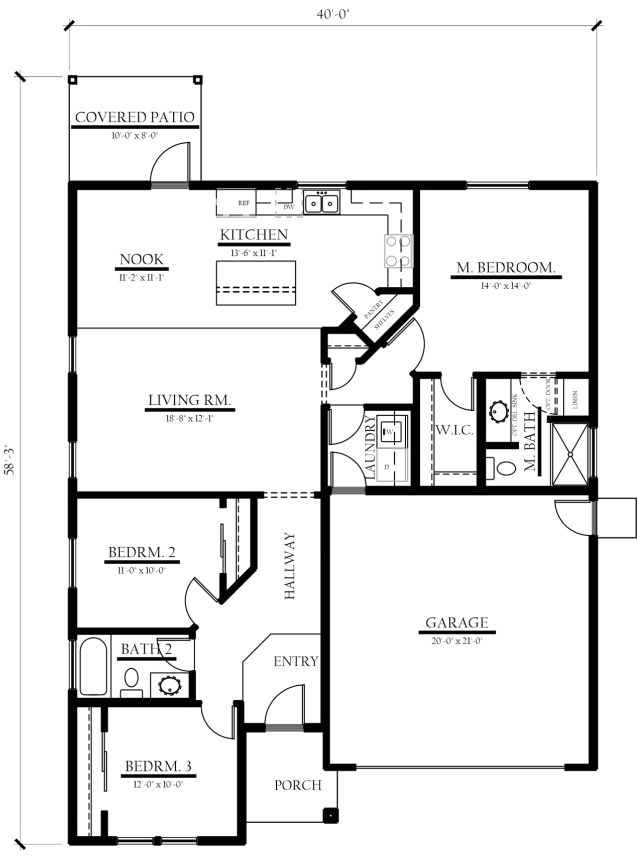
Elevation B



Elevation C



Elevation D



The Mill



3 Bedrooms



2 Bathrooms



1419 Sq. Ft.



2 Car Garage

Floorplans and renderings are for illustrative purposes only and are subject to change. Smee Homes, Inc. All rights reserved. Cross Creek Bend homes are listed by Melson Realty, Inc (lic #01477389). Listing Agents Javier Martinez (lic #01393690) (559) 202-6747 and Jose Jimenez (lic #01741038) (559) 972-7764.

